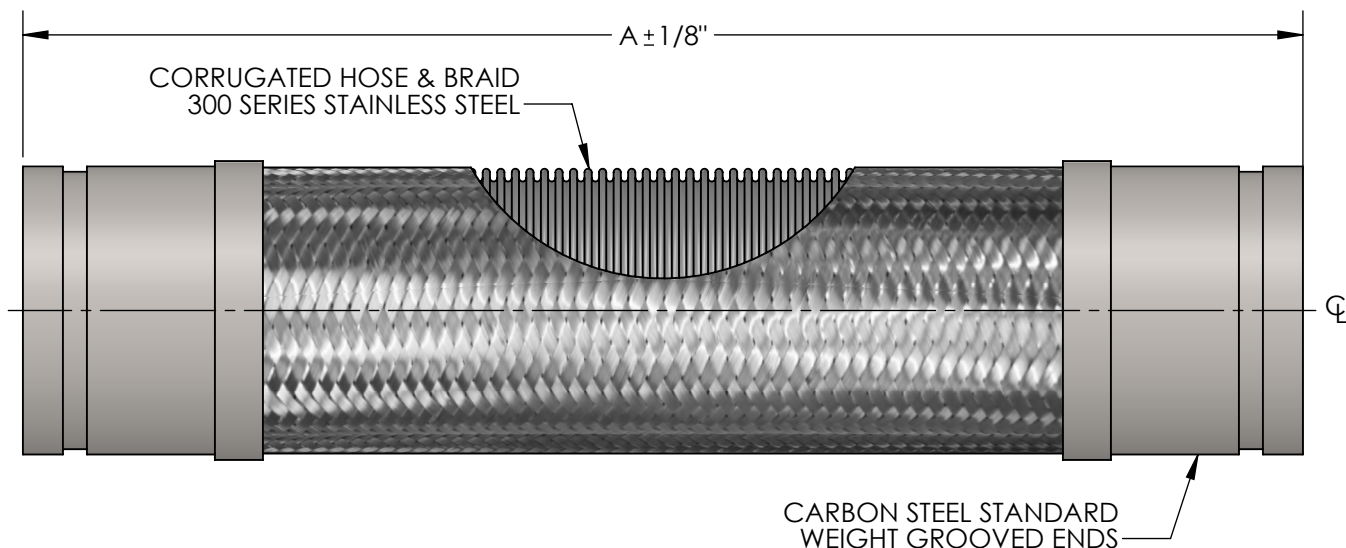


**MODEL GGC  
GROOVED FLEXIBLE PUMP CONNECTOR**

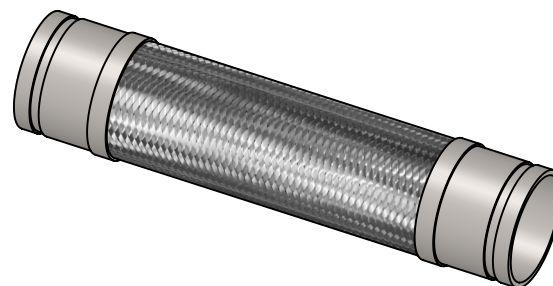


QTY	PART NUMBER	PIPE SIZE		A	PRESSURE RATING (PSI)*	WEIGHT (LBS)	PROJECT INFORMATION
		INCH	MM				
	GGC0200	2"	50	12"	516	9	
	GGC0250	2-1/2"	65	14"	387	13	
	GGC0300	3"	80	14"	316	14	
	GGC0400	4"	100	16"	232	18	
	GGC0500	5"	125	17"	191	25	
	GGC0600	6"	150	18"	165	28	
	GGC0800	8"	200	20"	234	52	
	GGC1000	10"	250	24"	230	75	
	GGC1200	12"	300	25"	161	100	

\*FOR SAFE WORKING PRESSURE ABOVE 70°F, MULTIPLY THE PRESSURE SHOWN AT 70°F TIMES THE CORRECTION FACTOR OF THE REQUIRED TEMPERATURE.

MAX INTERMITTENT OFFSET FROM CENTERLINE 1/8"  
MAX PERMANENT OFFSET FROM CENTERLINE 3/8"

TEMPERATURE (°F)	FACTOR
70	1.0
200	.91
300	.85
400	.78
500	.77
600	.76



**NSF 372 - LEAD FREE**

The wetted surface of this product contacted by consumable water contains less than one quarter of one percent (0.25%) of lead by weight. Material complies with state codes and standards, where applicable, requiring reduced lead content.

CUSTOMER: \_\_\_\_\_

PROJECT: \_\_\_\_\_

ENGINEER: \_\_\_\_\_

REV.	1	TEMP FACTOR UPDATED	DATE 12/28/2016
		2323 W. HUBBARD ST. CHICAGO, IL 60612 TEL: 312-738-3800 FAX: 312-738-0415 WWW.METRAFLEX.COM	
		<b>MODEL GGC</b> GROOVED FLEXIBLE PUMP CONNECTOR	
DRAWN BY: <b>DKISH</b>		DATE: <b>1/10/2014</b>	
APPROVED: <b>JC</b>		DATE: <b>1/10/2014</b>	
SCALE: N/A		DRAWING NUMBER: GGC-1	